

CAMIRA / BLAZER

· Composición: 100% Pura Lana Virgen. Tintes no metálicos.	· Composition: 100% Virgin Wool- Non metallic dyestuffs
· Peso: 460g/m2 ±5%	· Weight: 460g/m2 ±5%
· Resistencia a la abrasión: 50.000 cl. Martindale.	· Abrasion resistance: 50.000 cl. Martindale
· Inflamabilidad: EN 1021 - 1 Cigarette • EN 1021 - 2 Match • UNI 9175 Classe 1 IM • ÖNORM B 3825 & A 3800-1 • BS 5852 Section 4 gnition Source 5 when FR treated • NF D 60-013 AM18 • UNI 9175 Classe 1 • BS EN 13501-1:2007 Adhered Class D, s1, d0 • BS 476 Part 7 Class 1 • BS 476 Part 6 Class 0 when FR treatment requested • BS 5867 : Part 2 : Type B • Medium Hazard when Zirpro treated	· Flammability: EN 1021 - 1 Cigarette • EN 1021 - 2 Match • UNI 9175 Classe 1 IM • ÖNORM B 3825 & A 3800-1 • BS 5852 Section 4 gnition Source 5 when FR treated • NF D 60-013 AM18 • UNI 9175 Classe 1 • BS EN 13501-1:2007 Adhered Class D, s1, d0 • BS 476 Part 7 Class 1 • BS 476 Part 6 Class 0 when FR treatment requested • BS 5867 : Part 2 : Type B • Medium Hazard when Zirpro treated
· Mantenimiento: limpieza en seco o paño humedo. <a href="http://www.camirafabrics.com">www.camirafabrics.com</a>	· Maintenance: Professionally dry clean or wipe clean with a damp cloth. <a href="http://www.camirafabrics.com">www.camirafabrics.com</a>

GABRIEL / CRISP

· Composición: 93% Lana de Nueva Celandia 7% Poliamida	· Composition: 93% New Zealand wool 7% Polyamide
· Peso: 460g/ml	· Weight: 460g/lm
· Resistencia a la abrasión: 200.000cl. Martindale	· Abrasion resistance: 200.000cl. Martindale
· Inflamabilidad: BS 5852 Part 1 0,1 Cigarette & match • BS 476 Part 7 class II • BS EN 1021 1&2 Cigarette and Match • Class Uno UNI 9175 Class 1 I EMME • CA TB 117-2013 • IMO MSC 307(88) Annex 1 part 8 • MED Certificate IMO • ÖNORM A3800-B2-B3825-Q1 UK	· Flammability: BS 5852 Part 1 0,1 Cigarette & match • BS 476 Part 7 class II • BS EN 1021 1&2 Cigarette and Match • Class Uno UNI 9175 Class 1 I EMME • CA TB 117-2013 • IMO MSC 307(88) Annex 1 part 8 • MED Certificate IMO • ÖNORM A3800-B2-B3825-Q1 UK
· Mantenimiento: limpieza en seco. <a href="https://www.gabriel.dk/en">https://www.gabriel.dk/en</a>	· Maintenance: dry cleaning P(S). <a href="https://www.gabriel.dk/en">https://www.gabriel.dk/en</a>

GABRIEL / BREEZE FUSION

· Composición: 88% Lana de Nueva Celandia 12% Poliamida	· Composition: 88% New Zealand wool 12% Polyamide
· Peso: 590/ml	· Weight: 590g/lm
· Resistencia a la abrasión: 100.000cl. Martindale	· Abrasion resistance: 100.000cl. Martindale
· Inflamabilidad: BS 5852 Part 1 0,1 Cigarette & match • BS EN 1021 1&2 Cigarette and Match • CA TB 117-2013 • Class Uno UNI 9175 Class 1 I EMME	Flammability: BS 5852 Part 1 0,1 Cigarette & match • BS EN 1021 1&2 Cigarette and Match • CA TB 117-2013 • Class Uno UNI 9175 Class 1 I EMME
· Mantenimiento: limpieza en seco. <a href="https://www.gabriel.dk/en">https://www.gabriel.dk/en</a>	· Maintenance: dry cleaning P(S). <a href="https://www.gabriel.dk/en">https://www.gabriel.dk/en</a>

KVADRAT / REMIX

· Composición: 90% Lana10% Nylon	· Composition: 90% New wool worsted 10% Nylon
· Peso: 415 g/lin-m	· Weight: 415 g/lin-m
· Resistencia a la abrasión: 100.000 cl. Martindale	· Abrasion resistance: 100.000 cl. Martindale
· Inflamabilidad: AS/NZS 1530.3 • AS/NZS 3837, class 2 • BS 5852 Crib 5 with treatment • BS 5852 part 1 • EN 1021-1/2 • IMO FTP Code 2010 Part 8 • NF D 60 013 • NFPA 260 • ÖNORM B1/ Q1 • UNI 9175 1IM • US Cal. Bull. 117-2013	· Flammability: AS/NZS 1530.3 • AS/NZS 3837, class 2 • BS 5852 Crib 5 with treatment • BS 5852 part 1 • EN 1021-1/2 • IMO FTP Code 2010 Part 8 • NF D 60 013 • NFPA 260 • ÖNORM B1/ Q1 • UNI 9175 1IM • US Cal. Bull. 117-2013
· Mantenimiento: consultar en <a href="http://www.kvadrat.org">www.kvadrat.org</a>	· Maintenance: visit <a href="http://www.kvadrat.org">www.kvadrat.org</a>

T045  
Noviembre 2020

AKABA

Fabrics / Telas  
Group A

AKABA, S.A.  
ATALLU KALEA 14  
20170 USURBIL SPAIN  
TEL +34 943 372211 FAX +34 943 371052  
[www.akaba.net](http://www.akaba.net) [akaba@akaba.net](mailto:akaba@akaba.net)



camira BLAZER



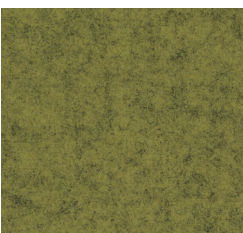
Ta-154 - SILCOATES



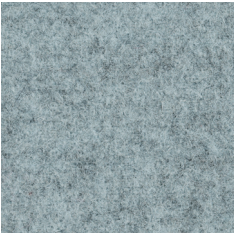
Ta-164 - EDGE HILL



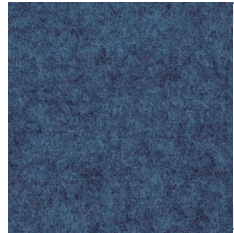
Ta-159 - ST. ANDREWS



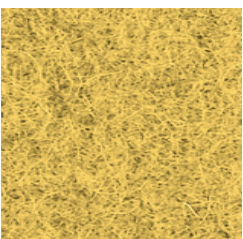
Ta-161 - CAMPHILL



Ta-162 - PLYMOUTH



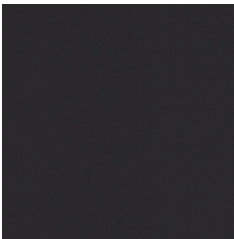
Ta-163 - NEWCASTLE



Ta-157 - DUNHURST



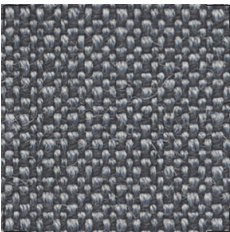
Ta-155 - SILVERDALE



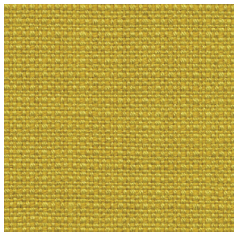
Ta-152 - NAPIER

Colores BLAZER fuera de este catálogo tendrán un suplemento de 45EUR neto por pedido.  
Other BLAZER colors out of this catalogue will have 45EUR net price increase per order.  
Les couleurs BLAZER en dehors de ce catalogue auront un supplément par commande de 45EUR net.

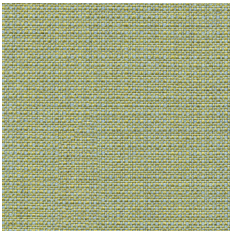
Gabriel® CRISP



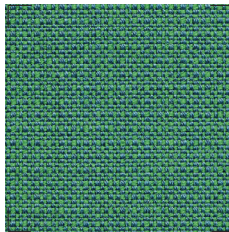
Ta-230 - CRISP 4022



Ta-231 - CRISP 4211



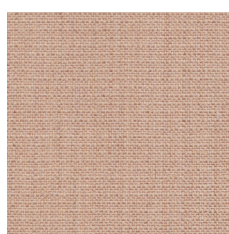
Ta-232 - CRISP 4201



Ta-233 - CRISP 4605



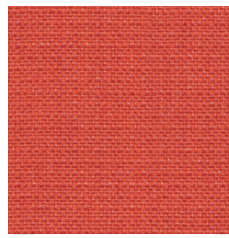
Ta-238 - CRISP 4115



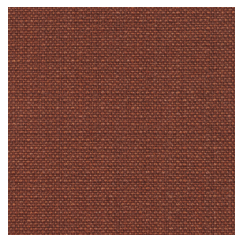
Ta-237 - CRISP 4711



Ta-239 - CRISP 4032

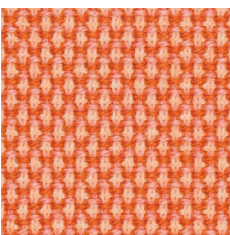


Ta-235 - CRISP 4431



Ta-234 - CRISP 4301

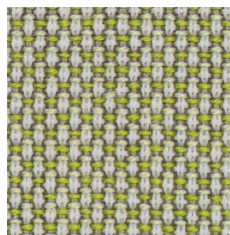
Gabriel® BREEZE FUSION



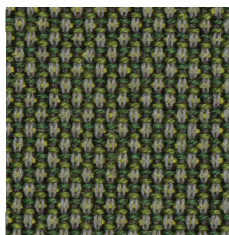
Ta-240 - BREEZE 4303



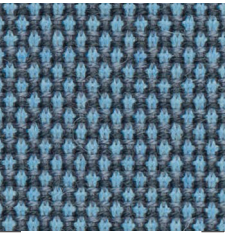
Ta-241 - BREEZE 4820



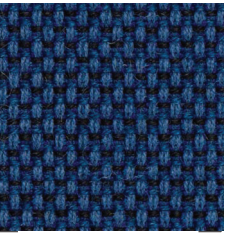
Ta-242 - BREEZE 4804



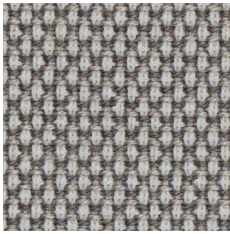
Ta-243 - BREEZE 4932



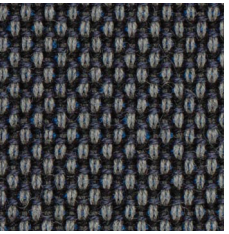
Ta-244 - BREEZE 4602



Ta-245 - BREEZE 4890



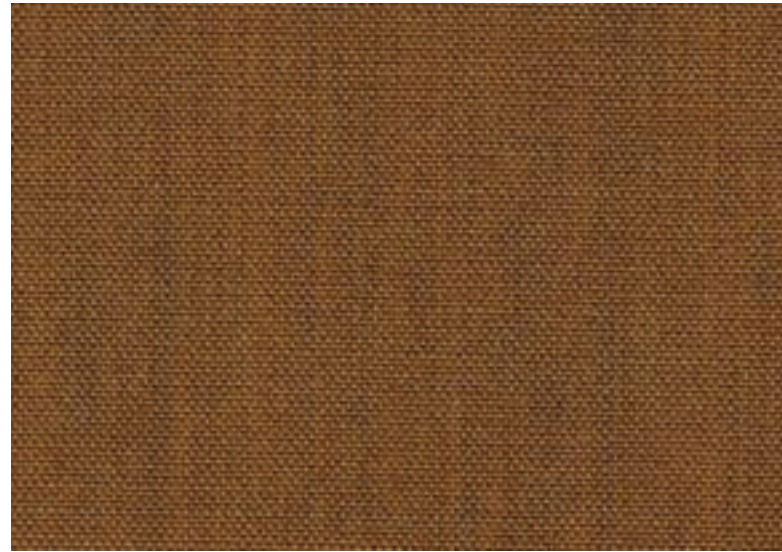
Ta-246 - BREEZE 4003



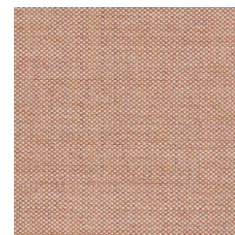
Ta-247 - BREEZE 4936

Colores CRISP/BREEZE FUSION fuera de este catálogo tendrán un suplemento de 45EUR neto por pedido.  
Other CRISP/BREEZE FUSION colors out of this catalogue will have 45EUR net price increase per order.  
Les couleurs CRISP/BREEZE FUSION en dehors de ce catalogue auront un supplément par commande de 45EUR net.

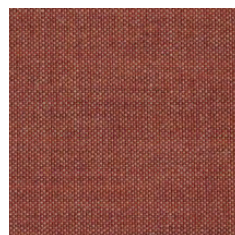
kvadrat REMIX3



Ta-229 - REMIX3 433



Ta-221 - REMIX3 612



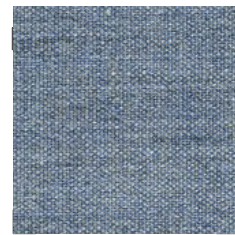
Ta-222 - REMIX3 632



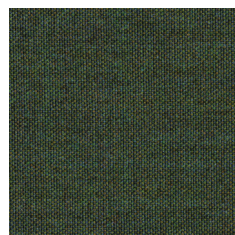
Ta-224 - REMIX3 223



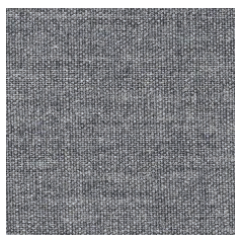
Ta-225 - REMIX3 233



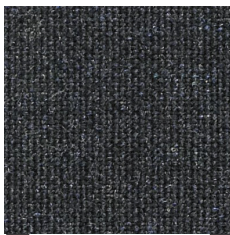
Ta-223 - REMIX3 733



Ta-226 - REMIX3 982



Ta-227 - REMIX3 143



Ta-228 - REMIX3 183

Colores REMIX fuera de este catálogo tendrán un suplemento de 45EUR neto por pedido.  
Other REMIX colors out of this catalogue will have 45EUR net price increase per order.  
Les couleurs REMIX en dehors de ce catalogue auront un supplément par commande de 45EUR net.