

AKABA



Tknika Office Bench

H750

A versatile and scalable table system, with endless possibilities for use in myriad sectors, such as contract, office and hospitality.

High pressure injected aluminum knots, direct leg knot option, knot for 90° joint and knot for 180° joint.

Legs in extruded aluminum 67.5 x 50mm or solid beech wood 67.5x50mm natural varnished.

Frame made of 40x30mm steel join bars and steel crossbars 80x40mm.

Top 20mm melamine, Fenix 20mm, 13mm compact resin or 20mm wood veneer.

Metallic finishes epoxy/polyester paint with a thickness of 50-90 microns depending on the colour, ISO 2409 Gt 0 adhesion and ASTM 2794 impact 2.5 joules reverse & direct or chrome finish, composition: 98.4% NI, 1.6% CR, 24.4 micron thickness and UNE EN ISO 2409-96 adhesion, Classification 0.

ENVIRONMENTAL CERTIFICATES

UNE-EN 15372 Mobiliario. Resistencia, durabilidad y seguridad. Furniture - Strength, durability and safety.

ISO 14006 Ecodesign.

EPD (Declaración medioambiental de producto, Environmental product declaration. Recyclable hasta un 99%.

 Recyclable up to **Reciclable hasta un 100 %**.

MEASURES

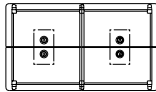
TKNIKA OFFICE BENCH-H750



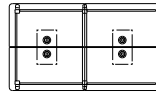
1400x1400mm
1600x1600mm
1800x1600mm
2000x1800mm



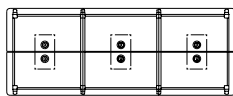
1400x1400mm
1600x1600mm
1800x1600mm
2000x1800mm



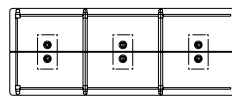
2800x1400mm
3200x1600mm
3600x1600mm
4000x1800mm



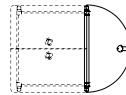
2800x1400mm
3200x1600mm
3600x1600mm
4000x1800mm



4200x1400mm
4800x1600mm
5400x1600mm
6000x1800mm



4200x1400mm
4800x1600mm
5400x1600mm
6000x1800mm



700x1400mm
800x1600mm
900x1800mm

ACCESSORIES



Suspended bench with drawer / TK
395x353xH355mm.
Melamine drawer and pencil holder in painted metal.
Single colour, four colours available: white, graphite, green, olive or pink.



Screen / TK
665x30xH410mm.
Upholstered sliding screen for bench.



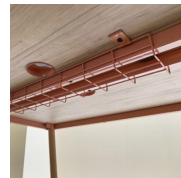
Pencil holder /TK
338x158xH73mm.
Painted metal pencil holder on worktop.



Top access / TK
Ø80mm pitch.
Round metal top access with removable cover.
Customisable colour.



Electrification Tray / TK
420x137x130mm.
Metallic tray for electrification housing.
Customisable in colour.



Grill tray / TK
400x150x60mm.
700x150x60mm



Table supplement / TK

IMAGES



AKABA

Atallu kalea 14
20170 Usurbil (Gipuzkoa)
Spain

akaba@akaba.net
T +34 943 372 211
F +34 943 371 052

© AKABA S.A. All rights reserved