

AKABA



Kabi Stool Pyramid

Stool with pyramid base, non stackable available in 2 heights.

Pyramid fixed frame stool, frame made of steel tube Ø16mm with footrest.

Shell single piece in 80% polypropylene + 20% fiberglass, 100% recyclable.

Foam cushion with 35 kg/m³ density and 15mm thickness for fully upholstered shells; glued using eco-friendly waterborne adhesive.

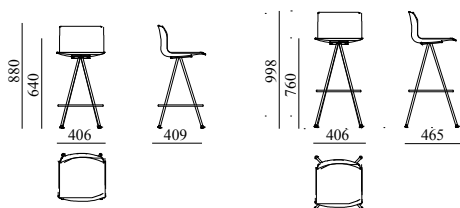
Polypropylene glides, option with felt.

Metallic finishes epoxy/polyester paint with a thickness of 50-90 microns depending on the colour, ISO 2409 Gt 0 adhesion and ASTM 2794 impact 2.5 joules reverse & direct.

Fully upholstered. See manufacturers' fabric specifications.

MEASURES

KABI STOOL PYRAMID



SPECS

**Product weight:**

H640: 5,3 kg

H760: 5,7 kg

**Packaging Information:**

H640: 540x540x970mm

H760: 540x540x1090mm

**Number of chairs per box:**

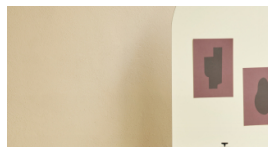
H640: 1 pcs. per box

H760: 1 pcs. per box

**Footage for upholstered versions****(COM):**

Metering: 0,60 ml/ leather 12 ft.

IMAGES



AKABA

Atallu kalea 14
20170 Usurbil (Gipuzkoa)
Spain

akaba@akaba.net
T +34 943 372 211
F +34 943 371 052

© AKABA S.A. All rights reserved