

Kabi Beam



Beam seating in 2, 3 and 4 places.

Crossbeam polished stainless steel with 50mm diameter and 3mm thickness; polished stainless steel tube leg bases with 40mm diameter and 3mm thickness.

Self-standing legs or with floor fixtures in mirror-polished gravity die-cast AG3T aluminium with anodised surface protection.

Shell single piece in 70% polypropylene + 30% fiberglass, 100% recyclable.

Foam cushion with 35 kg/m³ density and 15mm thickness for fully upholstered shells; foam cushion with 35kg/m³ density and 10mm thickness for versions with upholstered seat only; glued using eco-friendly waterborne adhesive.

Closed arms steel tube.

Metallic finishes epoxy/polyester paint with a thickness of 50-90 microns depending on the colour, ISO 2409 Gt 0 adhesion and ASTM 2794 impact 2.5 joules reverse & direct.

Upholstery seat only or fully upholstered. See manufacturers' fabric specifications.

Environmental certificates

UNE EN 16139 Resistencia, durabilidad y seguridad. Strength, durability and safety.

Résistance, durabilité et sécurité.

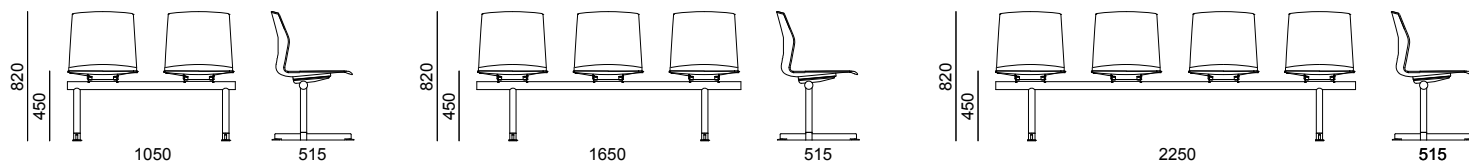
ISO 14006 Ecodesign.

EPD (Declaración medioambiental de producto, Environmental product declaration).

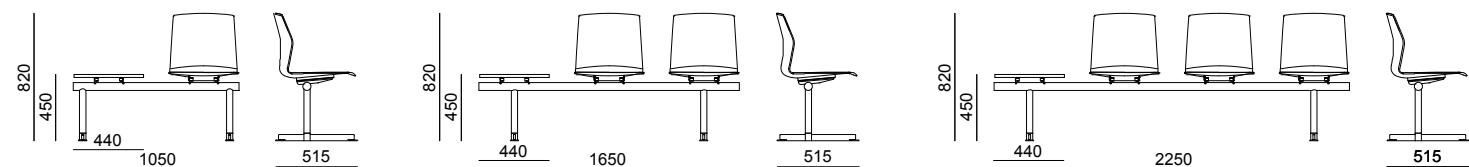
Recyclable up to 99 %.

Measures

Kabi Beam



Kabi Beam with Table



Specs

Product weight:

Kabi Bancada 2pl / 17 kg
Kabi Bancada 3pl / 25 kg
Kabi Bancada 4pl / 33 kg

Packaging information:

550x480x580 mm + 1380x210x560 mm
550x480x580 mm + 1580x210x560 mm
550x480x580 mm + 2100x210x560 mm

Footage for upholstered versions (COM):

(for more than 1 unit contact factory)

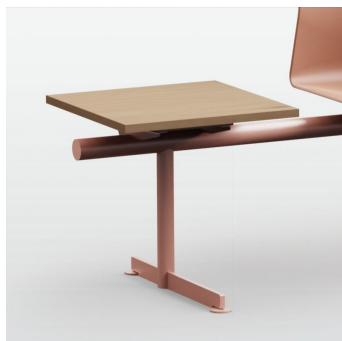
Seat uphol. 0,54 ml/seat - 10 feet/seat
Fully uphol. 0,86 lm/seat - 15 feet/seat

Accesories



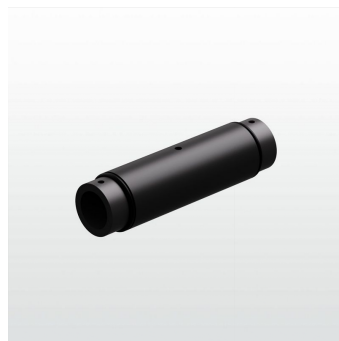
Closed arms / KBB

Powder coated, chromed or gloss.



Mesa - AC037

440x440x13mm.
Table in white or black compact laminate.



Pieza de unión - AC035 / AC036

Piece made of round tube
Ø50x3mm, powder-coated
for Kabi beam with or
without arms.

AKABA

Atallu kalea 14
20170 Usurbil (Gipuzkoa)
Spain

akaba@akaba.net
T +34 943 372 211
F +34 943 371 052