

HIKA

AKABA

**PENSI
DESIGN
STUDIO**

HIKA

Modular shelving

HIKA

Pensi Design Studio



Creation of endless universes in harmonious coexistence

PENSI DESIGN STUDIO

Con su versátil configuración, el programa modular de estanterías Hika permite la creación de micro-universos tanto individuales como colaborativos en los espacios de trabajo. Con un amplio programa de accesorios, Hika posibilita la integración de diferentes elementos en su estructura, dotando a los espacios de personalidad y de una marcada identidad. Hika invita a la fusión de diferentes universos para una convivencia armoniosa en un mismo espacio.

With a versatile configuration, the modular shelving program Hika allows for the creation of both individual and collaborative micro-universes in workspaces. Our selection of accessories, makes it possible to integrate different elements in its structure, adding personality and a strong identity to the space. Hika encourages the fusion of different universes for a harmonious coexistence within the same space.





Harmonious
coexistence within
the same space



Technical specifications

Diseñador - Designer

Pensi Design Studio



Un estudio de diseño internacional con sede en Barcelona que se distingue por el espíritu atemporal de sus productos. Han recibido numerosos premios y distinciones como el del Gremio Provincial de Comerciantes de Muebles (1989) o el Premio Nacional de Diseño (1997).

An international design studio based in Barcelona that is distinguished by the timeless spirit of its products. They have received numerous awards and distinctions such as the Provincial Guild of Furniture Merchants (1989) and the National Design Award (1997).

Variantes - Variants



Hika
H805



Hika
H1555



Hika
H1955



Hika
H2305



Reducing our environmental impacts

From our surroundings in Usurbil, Spain, we find inspiration in every corner. This landscape is not only our home but also our identity—the place we care for and preserve, fueling our commitment to sustainability. It's in this connection with nature that our ideas are born and our developments take shape.



EPD (Declaración medioambiental de producto) - EPD (Environmental Product Declaration)

Una EPD es una declaración ambiental certificada elaborada en conformidad con la norma internacional ISO 14025 consiste en un documento mediante el cual una empresa, de acuerdo con unos parámetros predeterminados, comunica el rendimiento ambiental del producto de forma transparente.

An EPD is a document that communicates the environmental impact of a material during its life cycle, from the raw material extraction process, transportation to the manufacturing site and the product manufacturing process.

ISO 9001

ISO 9001 es una norma mundialmente reconocida para la gestión de la calidad. Ayuda a organizaciones de todos los tamaños y sectores a mejorar su rendimiento, cumplir las expectativas de los clientes y demostrar su compromiso con la calidad.

ISO 9001 is a globally recognized standard for quality management. It helps organizations of all sizes and sectors to improve their performance, meet customer expectations and demonstrate their commitment to quality.

ISO 14001

La ISO 14001 es la norma líder mundial para sistemas de Gestión Ambiental. Entre los beneficios de implantar esta norma se incluyen la reducción del impacto medioambiental, la disminución de la generación de residuos y del consumo energético, y el recorte en los costes de la actividad empresarial.

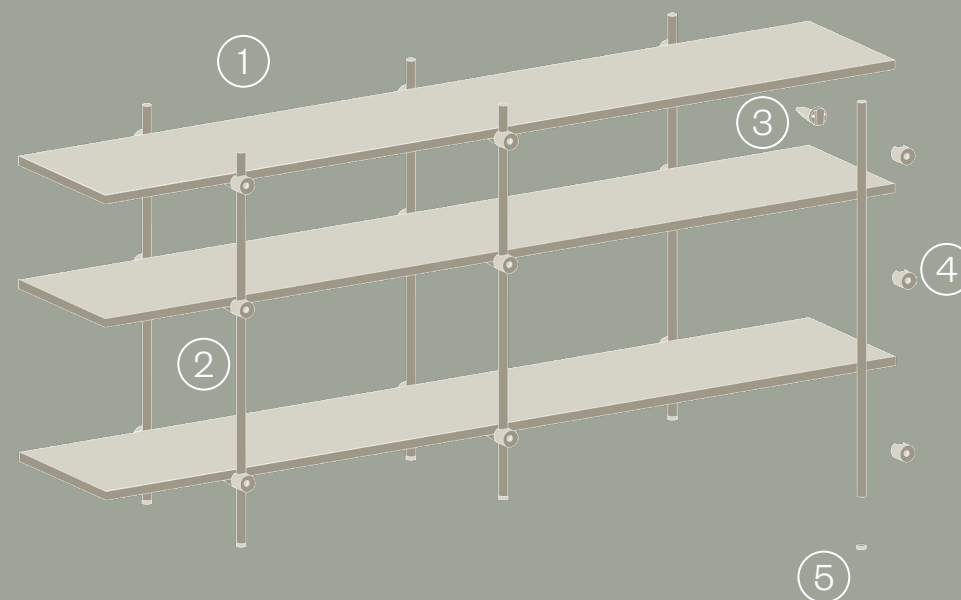
ISO 14001 is the world's leading standard for environmental management systems. The benefits of implementing this standard include reducing the environmental impact, cutting down on waste generation and energy consumption, and decreasing business activity costs.

ISO 14006

ISO 14006 es una norma Internacional que proporciona directrices para ayudar a las organizaciones a establecer, documentar, implementar, mantener y mejorar de forma continua su gestión del ecodiseño como parte de un sistema de gestión ambiental (SGA).

ISO 14006 is an international standard that provides guidelines to help organizations establish, document, implement, maintain and continuously improve their ecodesign management as part of an environmental management system (EMS).

Recyclable materials >99 %
Completely removable



1. Balda / Shelve
2. Columna / Column
3. Parte trasera nudo / Back node
4. Parte frontal nudo / Front node
5. Tacos / Glides

Encimeras - Table tops:

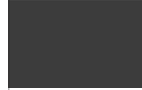
Melaminas - Melamines:



M-817 Blanco Polar / White Polar M-825 Sahara / Sahara M-821 Rosa Talco / Rose M-824 Rojo Arcilla / Red Clay M-823 Gris Arcilla / Grey Clay M-822 Verde Oliva / Olive Green

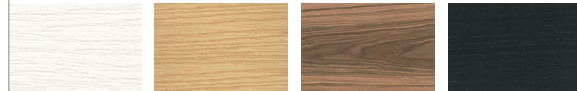


M-816 Roble Azabache / Oak Azabache M-820 Roble Sinatra / Oak Sinatra M-827 Nogal Siroko / Siroko Walnut M-819 Nogal Slow / Walnut Slow M-826 Roble Mesura / Oak Mesura M-814 Roble Aurora / Oak Aurora



M-818 Grafito / Graphite

Maderas - Woods:



M-690 Roble Blanco / White Oak M-687 Roble Natural / Natural Oak M-688 Nogal Natural / Natural Walnut M-686 Roble Negro / Black Oak

Fenix - Fenix:



M-901 Negro / Black

Acabados metálicos - Metal finishes:

Pinturas - Powder coats:



P-257 White Textured (*RAL 9016) P-1002 Ivory P-249 Grey Beige (*RAL 1019) P-3010 Latte P-893 Mocha (*RAL 7006) P-8015 Bordeaux (*RAL 8015)

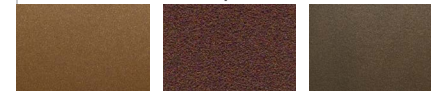


P-3040 Mint P-254 Traffic Grey (*RAL 7042) P-250 Mustard (*RAL 1015) P-1017 Apricot - Ochre (*RAL 1017) P-3012 Beige Red (*RAL 3012) P-251 Rose (*RAL 3017)



P-7003 Moss Grey (*RAL 7003) P-7024 Graphite Grey (*RAL 7024) P-5001 Navy Blue (*RAL 5001) P-246 Black (*RAL 9017) P-208 Black Textured (*RAL 9017)

Pinturas Oxidas - Oxidized powder coats:



P-261 Copper P-262 Oxide Brown Textured P-260 Anodic Bronze

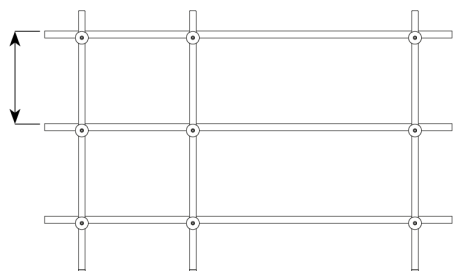
Pulidos-Cromados - Polished-Chromed:



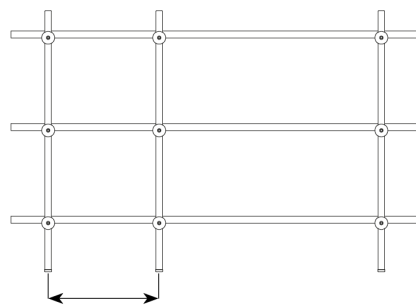
P-225 / P-200
Polished - Chromed

Reglas de configuración - Configuration rules

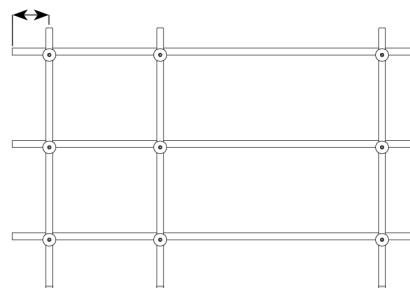
· 250 / 350 / 450



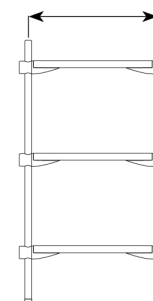
· 300 / 600 / 900



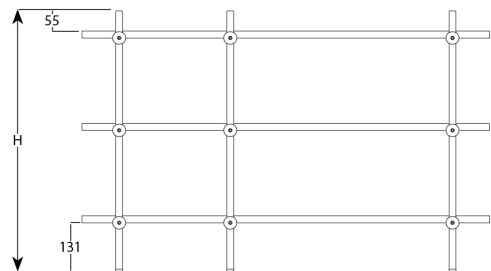
· 100 / 300

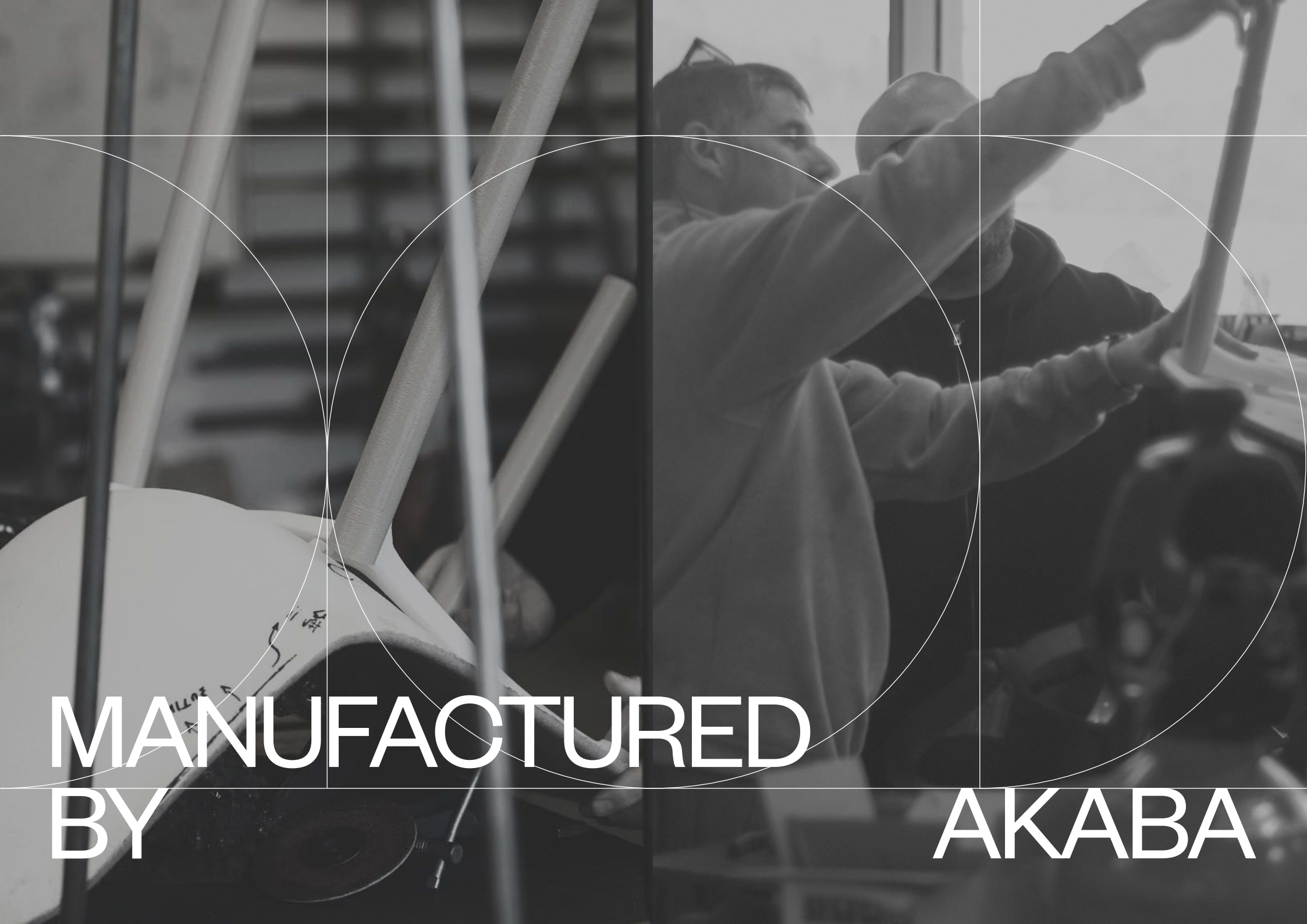


· 240 / 320 / 400



· (H): 805 / 1555 / 1955 / 2305





MANUFACTURED
BY

AKABA

DESIGNED
FOR PEOPLE

AKABA

Atallu kalea 14
20170 Usurbil (Gipuzkoa)
Spain
akaba@akaba.net
T +34 943 372 211
www.akaba.net